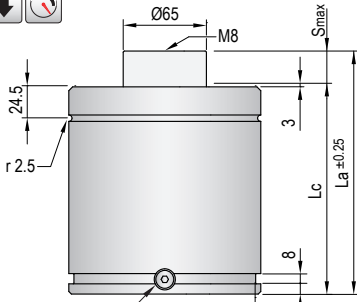
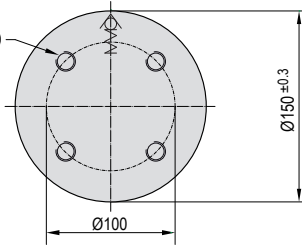


VDI SAFETY



Gas charging G1/8
TPFV1 valve
G1/8 adapter

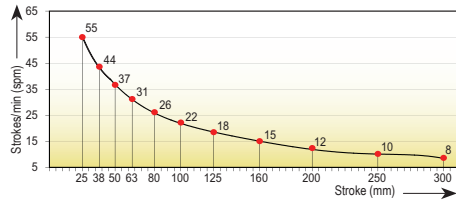
4xM10(16mm)



- Pressure medium **Nitrogen (N₂)**
- Max. charging pressure **150 Bar**
- Min. charging pressure **35 Bar**
- Rod seal area **33,18 cm²**
- Operating temperature **0°C - 80°C**
- Force increase by temperature **0,33 %/°C**
- Max. stem speed **1,6 m/s**
- Maintenance kit **Kit B5000**

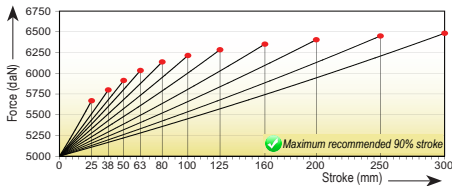


Maximum strokes / minute (at 20°C)

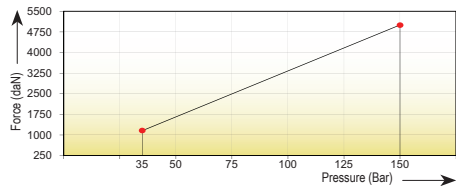


Code	Smax mm	La mm	Lc mm	Fa daN	90% F daN	100% Fc daN	P Bar	V l	Kg	
TPB 5000x25	25	190	165	5000 ±5% (20°C)	5570	5645	150 (20°C)	0,702	18,50	
TPB 5000x38	38	216	178		5685	5585			0,915	19,30
TPB 5000x50	50	240	190		5780	5885			1,074	20,10
TPB 5000x63	63	267	204		5885	6005			1,220	21,00
TPB 5000x80	80	300	220		5975	6110			1,432	22,85
TPB 5000x100	100	340	240		6040	6185			1,698	24,00
TPB 5000x125	125	390	265		6100	6255			2,030	26,45
TPB 5000x160	160	460	300		6155	6325			2,494	29,25
TPB 5000x200	200	540	340		6200	6375			3,025	32,10
TPB 5000x250	250	640	390		6240	6420			3,689	36,20
TPB 5000x300	300	740	440		6270	6455			4,352	39,10

Force/stroke ratio



Initial force/charging pressure ratio



Assembly possibilities



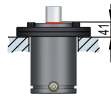
Follow guidelines
Page 287



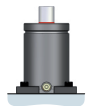
DROP-IN



SCREWS



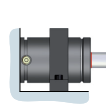
FS 150 · FSC 150



FP 150 · FPR 150



FB 150



FI 150 · FI 150/1